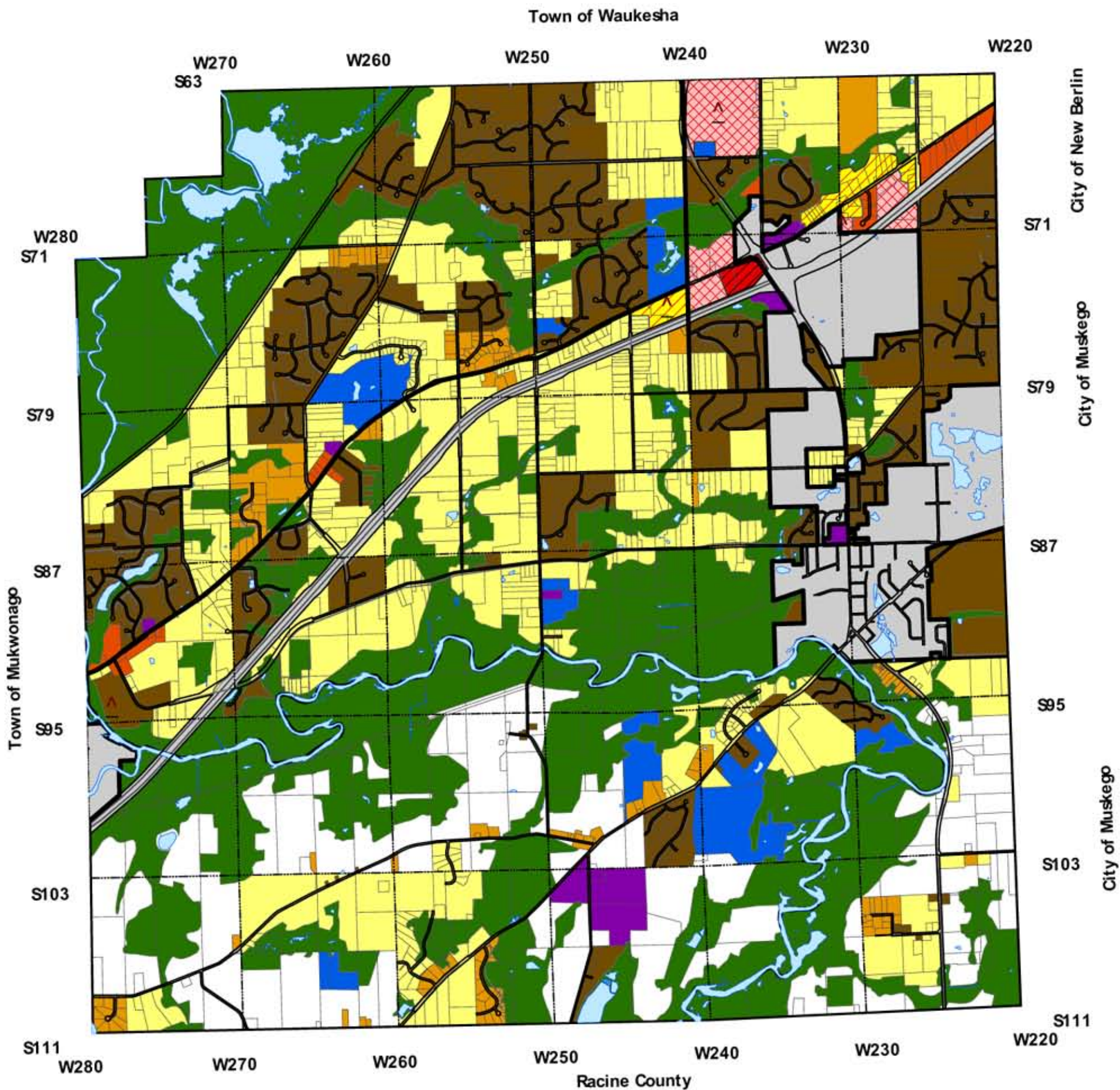
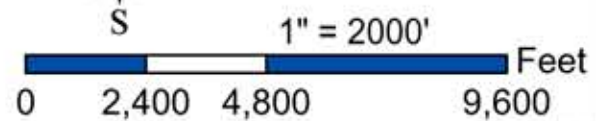


Town of Vernon Master Land Use Plan



Legend

- | | | |
|----------------------------|--------------------------------------|--------------------------------|
| Agricultural - 10 Acre | Commercial | Recreational |
| Rural Residential - 5 Acre | Mixed Business Park Uses | Educational and Institutional |
| Low Density Residential | Shopping Center Uses | Environmentally Sensitive Area |
| Medium Density Residential | Residential-Business Transition Area | Conditional Land Use Amendment |



Original Plan Adopted by the Town of Vernon Planning Commission October 27, 1994
 Master Plan Update Adopted by the Town of Vernon Planning Commission July 26, 2004
 Prepared by the Waukesha County Department of Parks and Land Use 2002
 Master Plan Update Prepared by R.A. Smith & Associates